

COMMUNITY UPDATE

SITE ACTIVITY UPDATE

The upcoming site activities during October will be as follows:

- Crushing and processing of demolition arisings
- Trimming of remaining Shopping Centre structure South
- Pile probing
- Realign the hoarding adjacent the Northern Line Station exit

CURRENT PROJECT PROGRESS



1. Pile and magnometer probing along the South East
2. Site vehicle access crossover construction and erection of gate along Walworth Road
3. Realignment of hoarding in the South West corner
4. Processing and crushing of demolition arisings
5. Site vehicle access crossover construction along Newington Butts
6. Pile probing
7. Structural demolition of Hannibal House

EMPLOYMENT OPPORTUNITIES

Keltbray's time on the Elephant & Castle project is slowly coming to an end, however, they do have other projects in Southwark. If you'd like to find out more, please visit www.southwarkworks.com/jobsboard for all live vacancies.

KEEPING YOU INFORMED

The development team including contractors Keltbray and Multiplex will continue to hold online Neighbourhood Information Forums the first Tuesday of every month. During these forums we will provide you with an update on the project and inform you of all planned works for the upcoming month.

THE NEXT VIRTUAL NEIGHBOURHOOD INFORMATION FORUM IS SCHEDULED FOR TUESDAY 5TH OCTOBER AT 18:30.

To register your interest, please email info@elephantandcastletowncentre.co.uk and a meeting link will be sent in advance

KELTBRAV CONTACTS AT ELEPHANT AND CASTLE:

Gareth Acres
Senior Project Manager (Demolition)

Lloyd Graham
Community Engagement Manager

24 Hour Support Contact Details
M: 07395 792302
E: elephantandcastle@keltbray.com

Website:
www.elephantandcastletowncentre.co.uk

Standard working hours will be:
Monday—Friday 08:00 to 18:00
Saturday 08:00 to 13:00

COMMUNITY UPDATE

MEET JOSEPH

He is a young man who lives and now works in Southwark. At 16 Joseph attended a work experience with Keltbray, and when he came of age, attended our pre-employment training programme, where we supported him to obtain a CSCS card.

Thanks to our commitments to s106 obligations we are able to offer locals like Joseph the opportunity to work on projects local to them. Joseph is now working as a demolition labourer and hopes to develop a career within the industry.



READ THE AUTUMN EDITION OF CASTLE CHRONICLE!

Brought to you by the Elephant and Castle Town Centre team, inside the Castle Chronicle you can read all about what's going on in the local community, including updates on the redevelopment of the town centre.

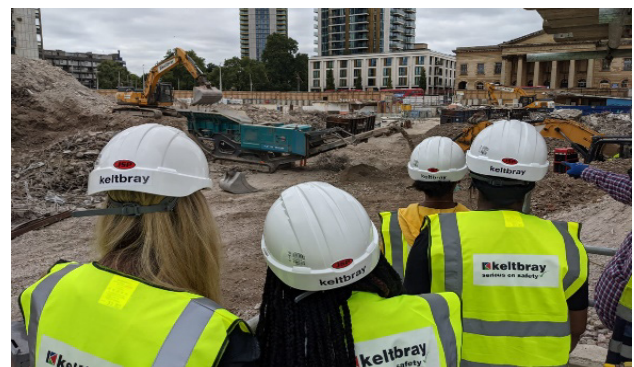
In our latest edition, you will find interviews with traders in Elephant and Castle, information about the town centre's very own educational workbooks, as well as updates on what is going on around town.

You can download a copy by visiting:

www.elephantandcastletowncentre.co.uk/community/

KELTBRAY MEETS LOCAL STUDENTS

We were fortunate enough to meet some students who were willing to give up their free time and continue exploring opportunities that will benefit their future decisions. Given that these students are from the local area, this gave them the opportunity to ask questions, learn about the development and see if there may be future opportunities for them.



ELEPHANT AND CASTLE VIRTUAL COMMUNITY HUB

The Elephant and Castle Community Hub is online and hosting **FREE** virtual wellness activities, fitness classes and arts & crafts workshops for local people.

To find out more about the activities on offer visit us at:

communityhubse1.co.uk or on Facebook @whatsonatelephant

ELEPHANT AND CASTLE COMMUNITY HUB

