

COMMUNITY UPDATE

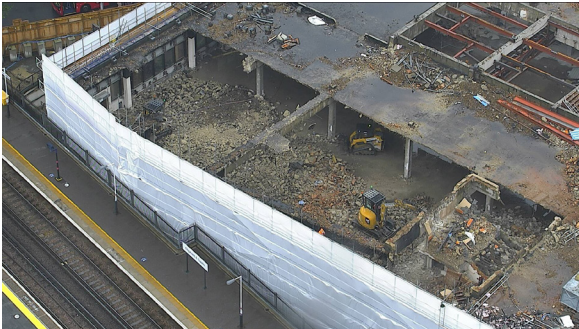
SITE ACTIVITY UPDATE

The current and upcoming site activities during July will be as follows:

- High reach and large excavator structural demolition of Shopping Centre South
- Reinstatement of bicycle racks on Walworth Road and the Peninsula
- Floor by floor structural demolition of Hannibal House
- Disconnection of lamp columns on the Peninsula
- CCTV relocation on Walworth Road
- Crushing of demolition arisings
- Magnometer and pile probing

PROJECT PROGRESS

Structural demolition of the Shopping Centre South is currently underway using a high reach excavator, large demolition excavators and small excavators for the floor by floor demolition.



The Shopping Centre North has now been demolished and all demolition arisings stockpiled, crushed and processed for re-use on site.



KEEPING YOU INFORMED

The development team including contractors Keltbray and Multiplex will continue to hold online Neighbourhood Information Forums the first Tuesday of every month. During these forums we will provide you with an update on the project and inform you of all planned works for the upcoming month.

THE NEXT VIRTUAL NEIGHBOURHOOD INFORMATION FORUM IS SCHEDULED FOR TUESDAY 6TH JULY AT 18:30

To register your interest, please email info@elephantandcastletowncentre.co.uk and a meeting link will be sent in advance.

KELTBRAY CONTACTS AT ELEPHANT AND CASTLE:

Gareth Acres

Senior Project Manager (Demolition)

Lloyd Graham

Community Engagement Manager

24 Hour Support Contact Details

M: 07395 792302

E: elephantandcastle@keltbray.com

Website:

www.elephantandcastletowncentre.co.uk

Standard working hours will be:

Monday—Friday 08:00 to 18:00

Saturday 08:00 to 13:00

ISSUE 10 | JULY 2021

COMMUNITY UPDATE

READ YOUR COPY OF THE CASTLE CHRONICLE!

Brought to you by the Elephant and Castle Town Centre team, inside the Castle Chronicle you can read all about what's going on in the local community, including updates on the redevelopment of the town centre.

In this edition you will find interviews with traders in Elephant and Castle. We are also taking this opportunity to celebrate our lockdown heroes, the amazing people who have helped others through the worst months of the pandemic. The Castle Chronicle also includes a 'Kids Corner', where our younger readers will meet Ella the Elephant and Chico the Castle.

You can read the Castle Chronicle by scanning the QR code and copies have also been delivered to homes across Elephant and Castle.



Scan the QR code with your phone to read the Castle Chronicle

MOON CHILD PROJECT

Keltbray attended a workshop with a group of under 16s exploring life skills, focusing on areas such as finance, hygiene and cooking. It is important we begin these conversations at an early age, that can help young people learn valuable life skills.



“Thank you to everyone who supported our 2nd workshop “Life Skills”

THE MOON CHILD PROJECT

ELEPHANT AND CASTLE VIRTUAL COMMUNITY HUB

The Community Hub continues to offer FREE virtual Creative Station workshops every Thursday at 4.30pm for 2-10-year olds. During the summer holidays the sessions will run at 10am every Thursday.

On Sunday 18th July at 7pm the hub will be hosting a Summer Party, the evening's entertainment includes a beach parade showcasing the best beach themed costumes, a summer themed quiz, a workshop to create your own tote bag and much more!

For more information on the timetable at the Elephant and Castle Community Hub, visit communityhubse1.co.uk & Facebook @whatsonatelephant

SOCIAL VALUE - UAE SOUTH BANK

Keltbray volunteered to help a group of Year 12 students at the University Academy of Engineering with a CV Workshop.

The workshop is aimed at not only helping students develop their CV, but to allow them to meet with HR professionals, and those with recruitment experience to get an insight in what makes them suitable for their career choices.

With the government highlighting that young peoples career prospects have been heavily impacted by the pandemic they need our support now more than ever.