

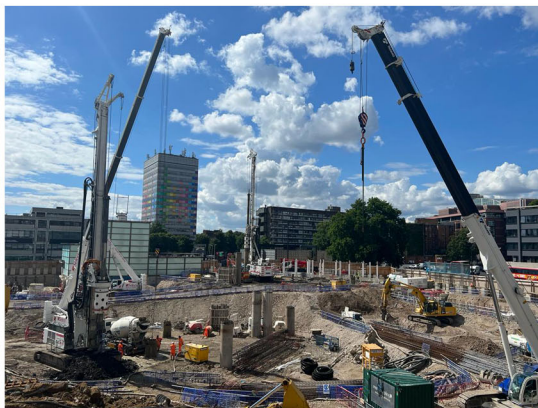
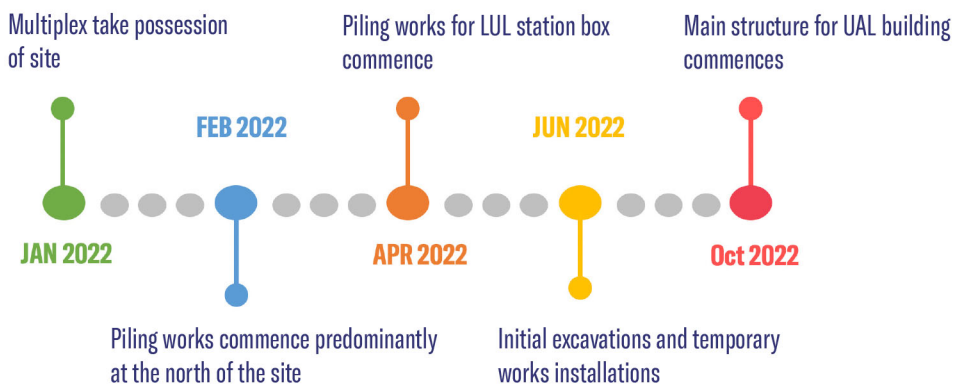
# COMMUNITY UPDATE

## SITE ACTIVITY UPDATE

### RECEIVING THE NEWSLETTER

Following the previous communications, we have now stopped distributing hard copies of the community update in an effort to be more sustainable and environmentally friendly as a project.

### CONSTRUCTION UPDATE



- Piling and Ground Works continue and are progressing well. AJ Morrisroe now have over 100 operatives on site.
- To date Multiplex have installed 500 CFA piles on site.
- Progress is continuing with piling the large diameter piles to the new Integrated Ticket Hall for London Underground, to date we have completed 100 of these piles.
- Next month Multiplex will be erecting the first tower crane on the project. This will be situated on the Northern end of the site.
- There are currently have 2 gates in use for construction vehicles entering and exiting the site. These are managed by teams of trained traffic marshals.

### KEEPING YOU INFORMED

The development team including contractor Multiplex will continue to hold online Neighbourhood Information Forums. During these forums we will provide you with an update on the project and inform you of all planned works for the upcoming month.

#### THE NEXT VIRTUAL NEIGHBOURHOOD INFORMATION FORUM IS SCHEDULED FOR TUESDAY 05th JULY AT 18:30

To register your interest, please email [info@elephantandcastletowncentre.co.uk](mailto:info@elephantandcastletowncentre.co.uk) and a meeting link will be sent in advance

### MULTIPLEX CONTACTS AT ELEPHANT AND CASTLE:

#### Amy Dawson

Social Value and Community Lead  
M: 07715 629701

#### Matt Fairbrother

Construction Director

#### Project Support Contact Details

M: 07738 809164  
E: [ECTC@multiplex.global](mailto:ECTC@multiplex.global)

#### Website:

[www.elephantandcastletowncentre.co.uk](http://www.elephantandcastletowncentre.co.uk)

#### Standard working hours will be:

Monday—Friday 08:00 to 18:00  
Saturday 08:00 to 13:00

#### Agreed additional working hours:

Monday—Friday 18:00 to 20:00

# COMMUNITY UPDATE

## INSPIRING ELEPHANT COMMUNITY FUND



### INSPIRING ELEPHANT COMMUNITY FUND

The Elephant and Castle Town Centre team and Get Living have announced the successful applicants for the new Inspiring Elephant Community Fund. The £50,000 a year fund provides grants to local groups, supporting short term projects, and contributing to longer term initiatives in the community. 12 successful applicants will receive grants of between £2,500 – £4,950 which will help support various local community initiatives. These initiatives will help fight inequality and benefit disability groups, senior citizens, and members of the BAME community.

The full list of this year's successful applicants include:

- Afro-Brazilian Arts and Cultural Exchange Institute
- Southwark Playhouse
- Blackfriars Settlement
- Superarts Academy of Performing Arts
- Silverfit Ltd
- Pembroke College Settlement
- St Jude's Senior Citizen Club
- Mental Fight Club
- Draper Together CIO
- Latin American Disabled People's Project
- The Sapphire Community Group
- Platform Cricket

### SOCIAL VALUE UPDATE

#### EMPLOYABILITY

Multiplex have secured another 2 work experience placements in the period. One student will join the team mid-July for two weeks and the other will join the team for one week in August. Multiplex continue to promote work experience opportunities locally. Through our supply chain partner, an additional 4 work experience placements have also been hosted on site.

To date, a total of 2,410 work experience hours have been undertaken on the project.

#### CONSIDERATE CONSTRUCTORS

The project is registered with the Considerate Constructors Scheme and is audited twice per year on various topics to ensure it is carried out considerately. Following the first scored audit, the project was awarded 45/45.

#### VOLUNTEERING

Multiplex have been working with Construction Youth Trust and a member of the team will be supporting students with a Practical Build challenge between 08:30-15:00 on the 4th July. This event is with Bacon's College, Southwark.

### ENVIRONMENTAL SUSTAINABILITY UPDATE

#### BUILDING IN SUSTAINABILITY

The project is targeting 4 BREEAM 2014 Excellent assessments and 1 BREEAM 2014 Very Good assessment. This is ensuring the development is a sustainable asset both in construction and operation.

#### CARBON REDUCTION

Biofuel is now the fuel that is being utilised for the concrete pumps on site. Biofuel creates 90% less carbon emissions when compared to red diesel. This is helping to significantly reduce onsite carbon emissions.